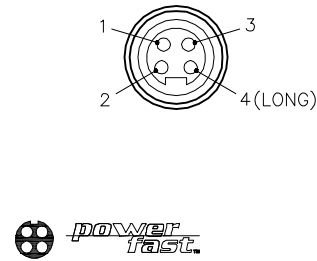
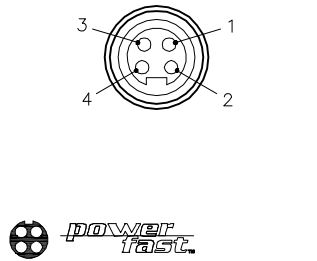
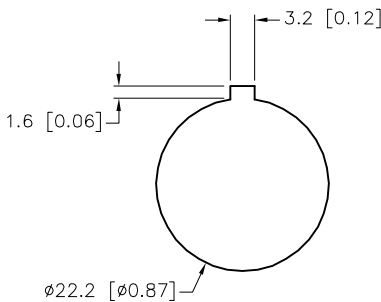
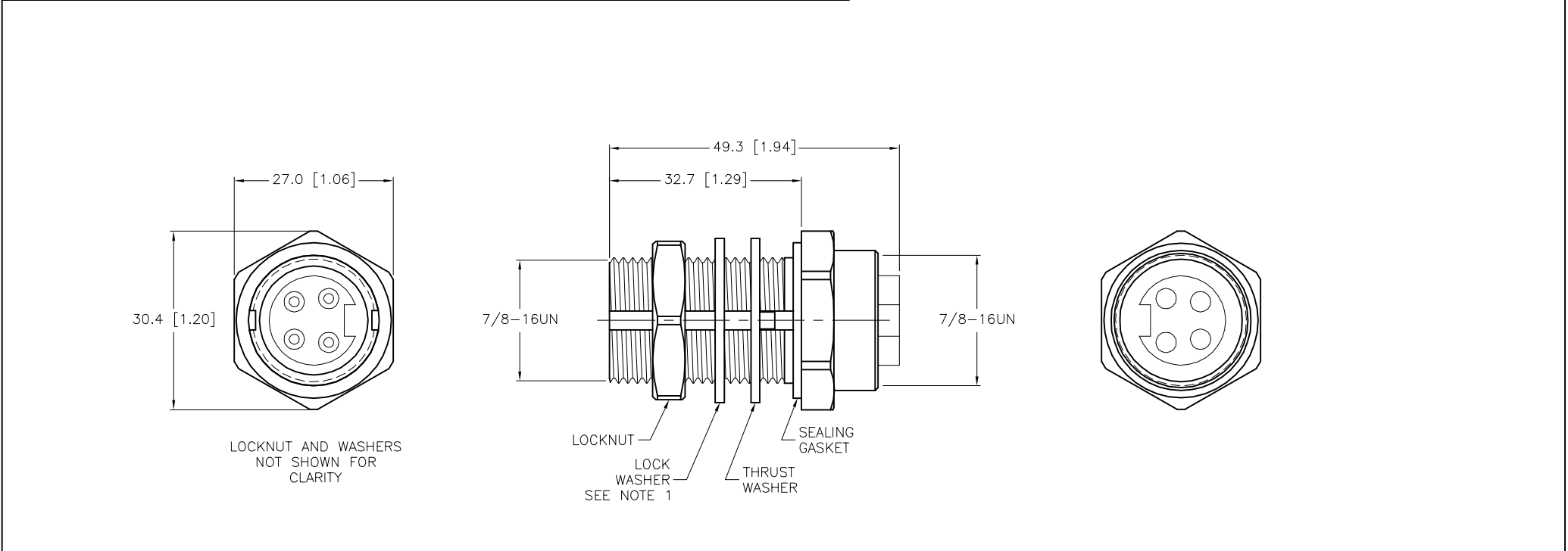


MALE END VIEW	FEMALE END VIEW	TYPICAL PANEL CUTOUT	SPECIFICATIONS	
			CONTACT CARRIER MATERIAL	TPU
			CONTACT MATERIAL/PLATING	BRASS/GOLD
			HOUSING MATERIAL/PLATING	BRASS/NICKEL
			RATED CURRENT [A]	15.0 A
			RATED VOLTAGE [V]	600 V
			TEMPERATURE RATING	-40°C to +105°C (-40°F to +221°F)
			PROTECTION CLASS	MEETS NEMA 1,3,4 AND IEC IP67
			ACCOMODATES WALL THICKNESS	.040" (1.0 mm) to .875" (22.2 mm)
			GASKET MATERIAL	BUNA N







CAUTION:

RISK OF ELECTRICAL SHOCK

DO NOT DISCONNECT UNDER LOAD

SOURCE DRAWING - FOR REFERENCE ONLY

NOTE(S): 1. LOCK WASHER TO BE INSTALLED ON THREADS AS SHOWN.					RELATED DOCUMENTS		3RD ANGLE PROJECTION		THIS DRAWING IS CONFIDENTIAL AND THE PROPERTY OF TURCK INC. USE OF THIS DOCUMENT WITHOUT WRITTEN PERMISSION IS PROHIBITED.		3000 CAMPUS DRIVE MINNEAPOLIS, MN 55441 1-800-544-7769 (763) 553-7300 (763) 553-0708 fax www.turck.us					
					1.											
					4.											
					MATERIAL		ALL DIMENSIONS DISPLAYED ON THIS DRAWING ARE FOR REFERENCE ONLY		DRFT		RDS		DATE 09/01/11		DESCRIPTION	
					SEE SPECIFICATIONS						APVD		SCALE 1 = 1.0		RSF RKF 44/22	
					FINISH		CONTACT TURCK FOR MORE INFORMATION		UNIT OF MEASUREMENT				IDENTIFICATION NO.		REV	
					SEE SPECIFICATIONS				MILLIMETER [INCH]				U2-18681		D	
D					UPDATE CONTACT HOLDERS FROM PVC TO TPU		RDS		12/01/15		52552					
REV					DESCRIPTION		BY		DATE		ECO NO.		DO NOT SCALE THIS DRAWING			
													FILE: U2-18681		SHEET 1 OF 1	